

A large, vibrant sunset over a body of water, with the sun low on the horizon, casting a golden glow across the sky and reflecting in the water. The sky is filled with dramatic, orange and yellow clouds. The water is calm, mirroring the sky's colors. In the distance, there are silhouettes of trees and land.

Teaching & Learning

New Director Orientation – Mr. Rewolinski

October 25, 2023

What It's All About



I IMPACT STUDENT ACHIEVEMENT

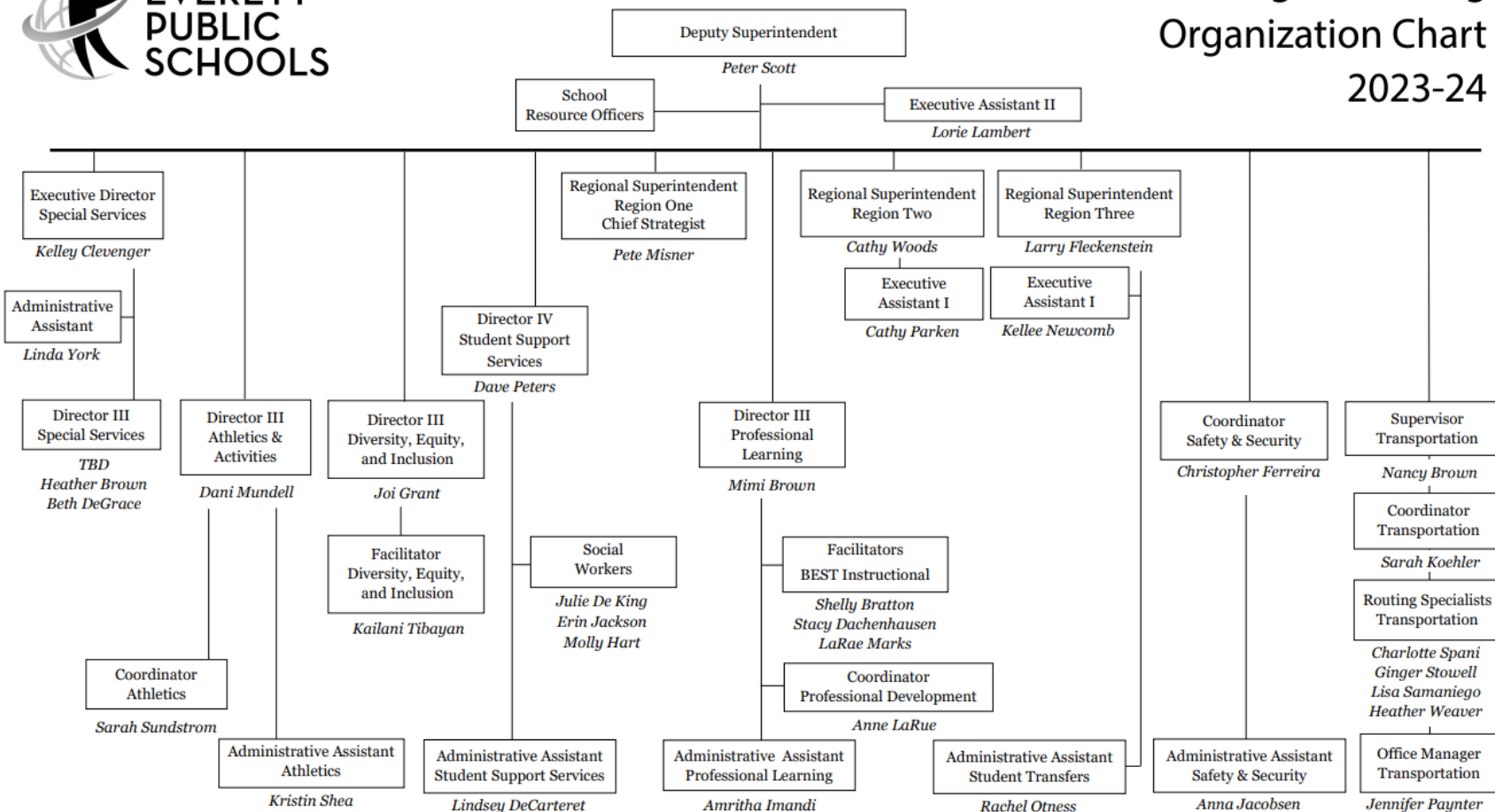
Students in Everett Public Schools are achieving when they demonstrate both proficiency and growth to aligned standards.



Teaching & Learning Organization Chart



Teaching & Learning Organization Chart 2023-24



Teaching & Learning Organization Chart



Teaching and Learning Organization Chart 2023-24

Deputy Superintendent

Peter Scott

Regional Superintendent
Chief Strategist

Pete Misner

Region One

Regional Superintendent

Cathy Woods

Region Two

Regional Superintendent

Larry Fleckenstein

Region Three

Strategic Plan

Elementary Schools

- **Emerson Elementary**
Blythe Young, Principal
Kelly Bell, Asst. Principal
- **Garfield Elementary**
Kathy Stilwell, Principal
Eric Jennings, Asst. Principal
- **Hawthorne Elementary**
Jacob Ellsworth, Principal
Jennifer Reyes, Asst. Principal
- **Jackson Elementary**
Darren Larama, Principal
- **Lowell Elementary**
Elizabeth Kelley, Principal
Victoria Dowdy, Asst. Principal
- **Madison Elementary**
Jessica Corneille, Principal
Amy Lee, Asst. Principal

Elementary Schools

- **Jefferson Elementary**
Steve Hopkins, Principal
Jalene Finley, Asst. Principal
- **James Monroe Elementary**
Rich Middaugh, Principal
Catarino Rodriguez, Asst. Principal
- **Penny Creek Elementary**
Marti Shefeland, Principal
Stephanie Kirkpatrick, Asst. Principal
- **Silver Lake Elementary**
Theresa Campbell, Principal
Jalene Finley, Asst. Principal
- **View Ridge Elementary**
Tina Wood, Principal
Amy Lee, Asst. Principal
- **Whittier Elementary**
Tony Wentworth, Principal
Eric Jennings, Asst. Principal

Middle School

- **Evergreen Middle**
Sara Idle, Principal
Medger Wells, Asst. Principal
Monica Hauke, Asst. Principal
- **North Middle**
Tyler Ream, Principal
Drew Williams, Asst. Principal
Allison MacGregor Fornes, Asst. Principal

High School

- **Everett High**
Kelly Shepherd, Principal
Erik Heinz, Asst. Principal
Camille Mora, Asst. Principal
Kevin Allen, Asst. Principal
- **Sequoia High**
(Online High School, Port Gardner)
Belinda Mountjoy, Principal

Elementary Schools

- **Cedar Wood Elementary**
Bruce Rhodes, Principal
Claudio Jara, Asst. Principal
- **Forest View Elementary**
Monique Beane, Principal
Brent Radcliff, Asst. Principal
- **Mill Creek Elementary**
Cindy Foster, Principal
Kristin Dickert, Asst. Principal
- **Silver Firs Elementary**
Aleta Smoot, Principal
Brent Radcliff, Asst. Principal
- **Tambark Creek Elementary**
Celia O'Connor-Weaver, Principal
Claudio Jara, Asst. Principal
- **Woodside Elementary**
Betty Cobbs, Principal
Catarino Rodriguez, Asst. Principal

Middle Schools

- **Eisenhower Middle**
Wilnie Gideon, Principal
Pachomius Schmidt, Asst. Principal
 - **Gateway Middle**
Matthew Bennett, Principal
Elizabeth Sanchez, Asst. Principal
 - **Heatherwood Middle**
Laura Wellington, Principal
Chris Doll, Asst. Principal
- #### High School
- **Cascade High**
Michael Takayoshi, Principal
Krista Bjorge, Asst. Principal
Kate Vafaezadeh, Asst. Principal
Katherine Mayan, Asst. Principal
 - **Henry M. Jackson High**
Lance Balla, Principal
Sechin Tower, Asst. Principal
Michelle Renee, Asst. Principal
Bethany Stoddard, Asst. Principal

Regional structure & primary responsibilities



Peter Scott	Pete Misner	Cathy Woods	Larry Fleckenstein
Deputy Superintendent	Regional Superintendent Chief Strategist	Regional Superintendent	Regional Superintendent
<ul style="list-style-type: none"> Leadership development Admin & supervisors team design Weekly principal packet comms Instructional Review design Instructional walks support School improvement plan coordination Summer Leadership Institute Special Education Student Support Services Professional Learning Diversity, Equity, Inclusion Transportation Athletics/Activities School Safety 	<p><u>Region 1:</u> Emerson Garfield Hawthorne Jackson Lowell Madison</p> <ul style="list-style-type: none"> Elementary & Region 1 principals' meetings Strategic plan oversight Summer Leadership New admin. induction 	<p><u>Region 2:</u> Jefferson Monroe Penny Creek Silver Lake View Ridge Whittier Evergreen North Everett Sequoia/Port Gardner</p> <ul style="list-style-type: none"> High school & Region 2 principals' meetings PTSA liaison Summer Leadership New admin. induction 	<p><u>Region 3:</u> Cedar Wood Forest View Mill Creek Silver Firs Tambark Creek Woodside Eisenhower Gateway Heatherwood Cascade Jackson</p> <ul style="list-style-type: none"> Middle school & Region 3 principals' meetings Board/District policies & procedures Student Rights & Responsibilities School Transfers Dept. Policy Review & Discipline Appeal Councils Summer Leadership New admin. induction

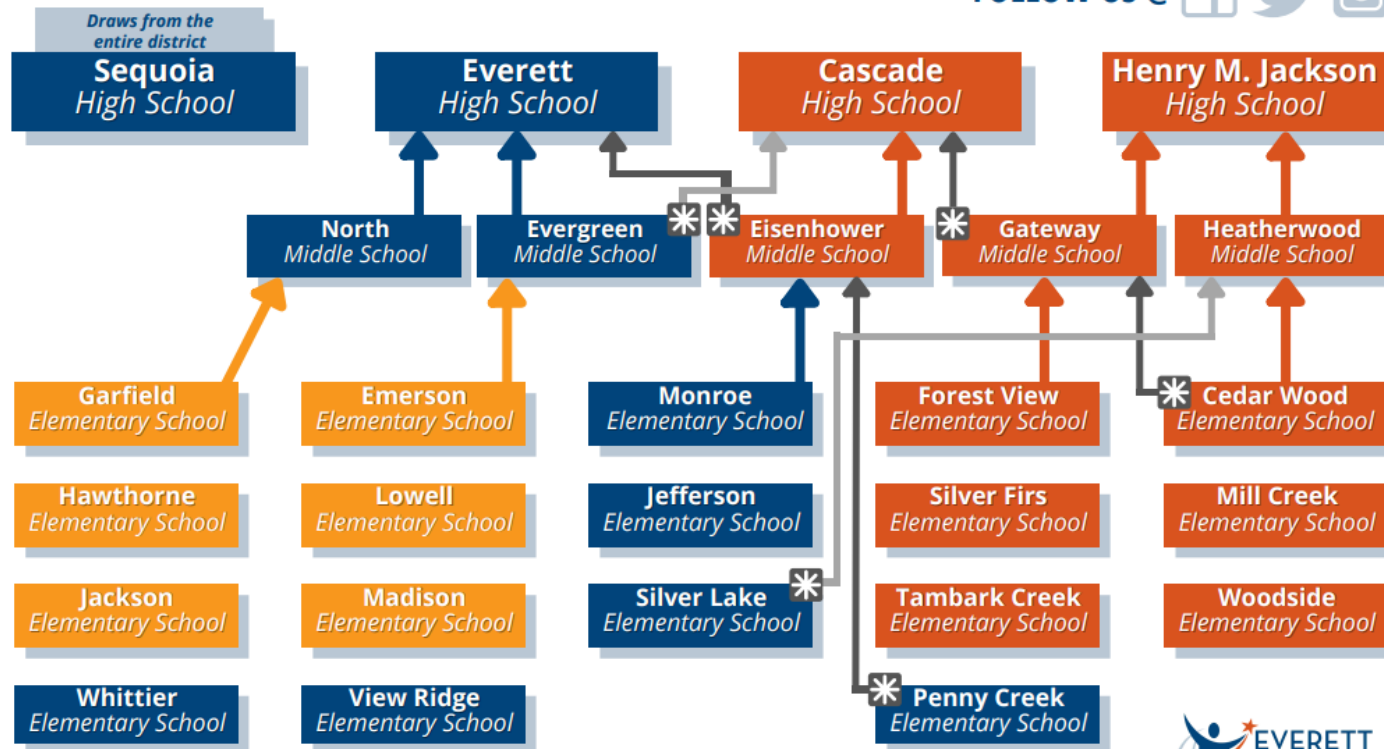
Regional structure & primary responsibilities



School feeder pattern

3900 Broadway, Everett, WA 98201
425-385-4000 www.everettsd.org

FOLLOW US @   



* These schools feed into more than one school, depending on the student's address.



REGION ONE CONTACT

Pete Misner, Regional Superintendent
pmisner@everettsd.org | 425-385-4020
Kellee McManus/Cathy Parken, Co-Executive Assistants

REGION TWO CONTACT

Cathy Woods, Regional Superintendent
cwoods2@everettsd.org | 425-385-4021
Cathy Parken, Executive Assistant

REGION THREE CONTACT

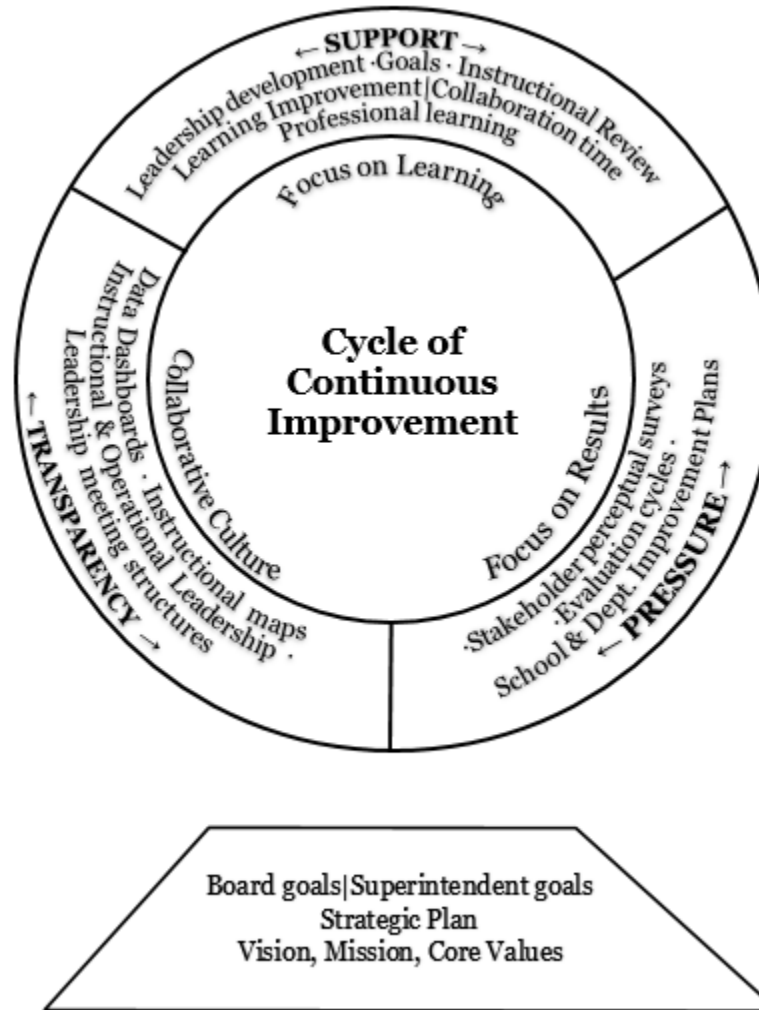
Larry Fleckenstein, Regional Superintendent
lfleckenstein@everettsd.org | 425-385-4023
Kellee McManus, Executive Assistant



Foundation of T&L Work



Balanced Accountability Model

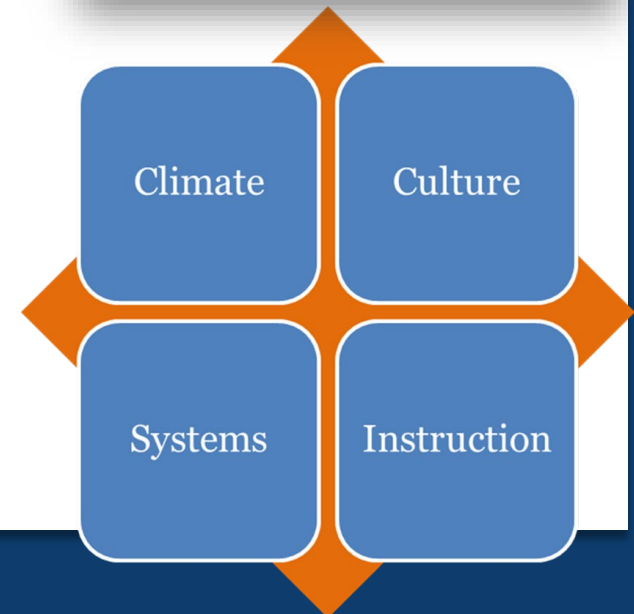


Professional Development Systems



Summer Leadership Institute: Administrators & Supervisors Team *Play Ball!*

- 6/28: School Improvement Series
 - Strengthening Instructional Leadership Teams
- 7/31-8/1 Leadership Development
 - Leading for Impact & Systems Improvement
- 8/2 School & Operational Improvement
 - Annual cycles of improvement
- 8/3 Administrative Team Retreats
- 8/9 School Improvement Workshop
 - High quality instruction
 - Student achievement analysis
 - Systems coherence
- 8/14 Instructional Leadership Team Retreats



Professional Development Systems



New Hire Orientation

August 22-25

- Technology, HR 101
- Establishing effective teacher-student partnerships
- In-building classroom support / induction; safety, school culture
- Instructional models; content overview; new hire social evening
- Continuous improvement model;
- Canvas / gradebook; curriculum, instruction, assessment



Professional Development Systems



EPS Learns

August 23-25

- Self-selected options
- 109 sessions
- Academic content areas, including college/career readiness / CTE
- Elevating equitable, inclusive instructional practices & student voice
- Instructional technology best practices
- SEL / RULER & PBIS sessions
- Safety & security

Paraeducator Professional Learning August 29

- Effective teaming practices
- Child development
- SEL / RULER & PBIS sessions
- Leveraging instructional technology



Professional Development Systems



Annual leadership meeting structures

- School Improvement Planning Series
- Learning Improvement Days (LID)
- Administrators & Supervisors
- Quarterly regional principals
- Principal meetings by level (ES, MS, HS)





School Safety & Emergency Preparation

- Proactive planning
- Skill readiness
 - Incident Command System
- Emergency response
- School Resource Officer (SRO) training
- Run, hide, fight training
- Drill and practice – monthly
- Social emotional learning
- Harassment, Intimidation, Bullying (HIB) training
- Threat assessments



Professional Development Systems



District Safety & Emergency Preparation

- Preparation and training
 - Simulations
 - New Hire Orientation, New Administrators
- Communication
 - RAVE 911
- Physical safety
- Card access
- Video intercom systems, two-way radios, Incident Command System, First Aid



Multi-Tiered System of Supports



Multi-Tiered System of Supports

A layered continuum of supports to meet ALL learners' needs.

TIER 1 - Universal

- » Instructional interventions
- » Positive behavior supports
- » SEL consultations
- » Counseling materials
- » District/school-wide activities
- » Student planning

Universal

TIER 2 - Targeted

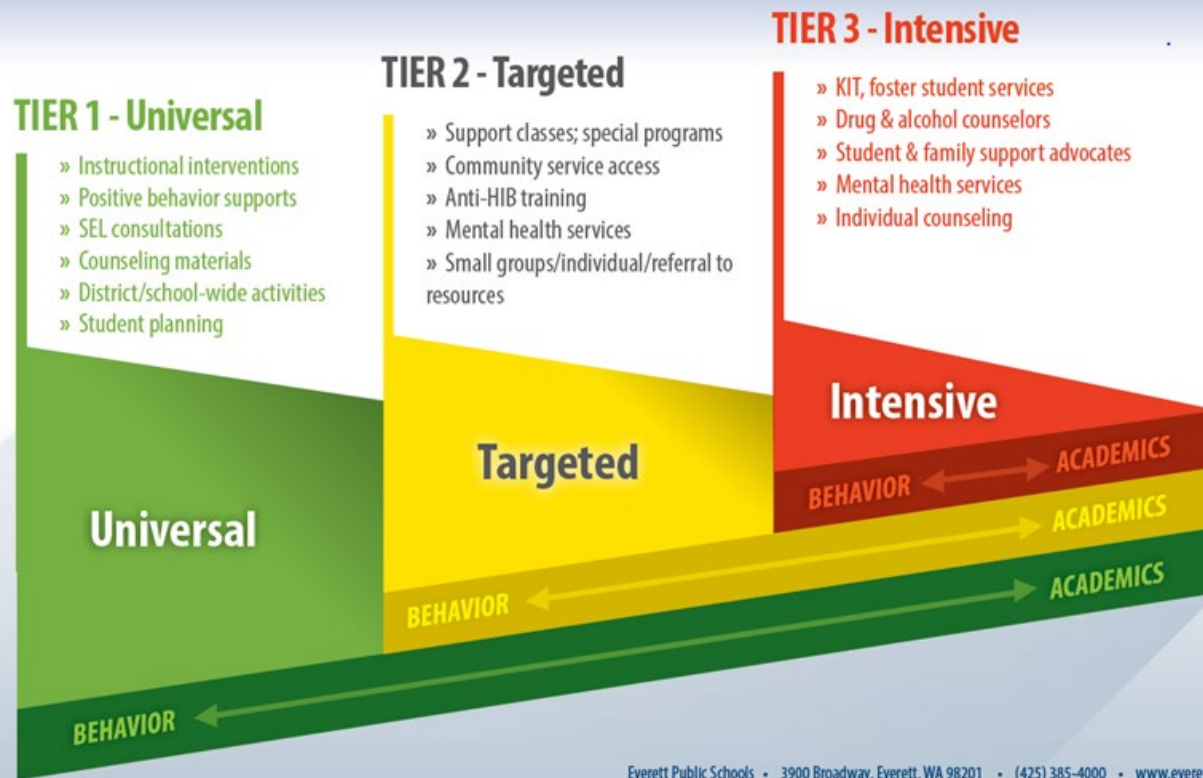
- » Support classes; special programs
- » Community service access
- » Anti-HIB training
- » Mental health services
- » Small groups/individual/referral to resources

Targeted

TIER 3 - Intensive

- » KIT, foster student services
- » Drug & alcohol counselors
- » Student & family support advocates
- » Mental health services
- » Individual counseling

Intensive



Everett Public Schools • 3900 Broadway, Everett, WA 98201 • (425) 385-4000 • www.everettsd.org

Social Emotional Learning



**SECOND
STEP®**



Source: Collaborative for Academic, Social, and Emotional Learning



Introduction to Emotions and Emotional Intelligence

Approx. Time: 2 hours

[View Course](#)

Course Progress: 100% | Assessment Score: 10/10



RULER Tools of Emotional Intelligence

Approx. Time: 2 hours

[View Course](#)

Course Progress: 100% | Assessment Score: 10/10

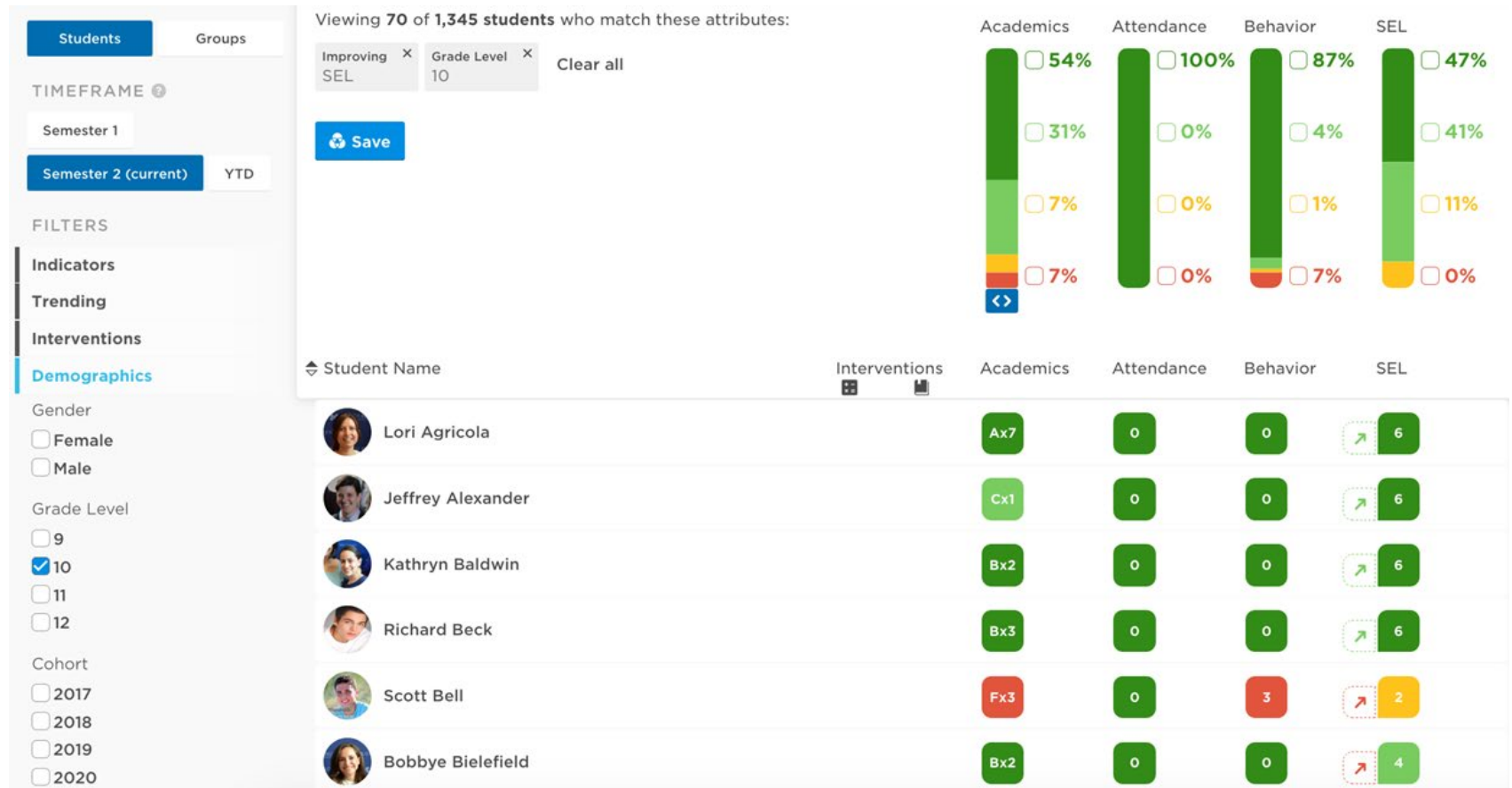


SEL Measurement Tools: Panorama



- Survey measuring student social-emotional learning
 - grit
 - growth mindset
 - school safety
 - self-management
 - sense of belonging
 - social awareness
 - self-efficacy
 - teacher-student relationships
- Provides network of resources leading to interventions

Cross-referencing SEL with other factors



School Improvement Plans



2023 - 2024 School Improvement & Title 1 Plan

Garfield Elementary School
Kathleen Stilwell, Principal

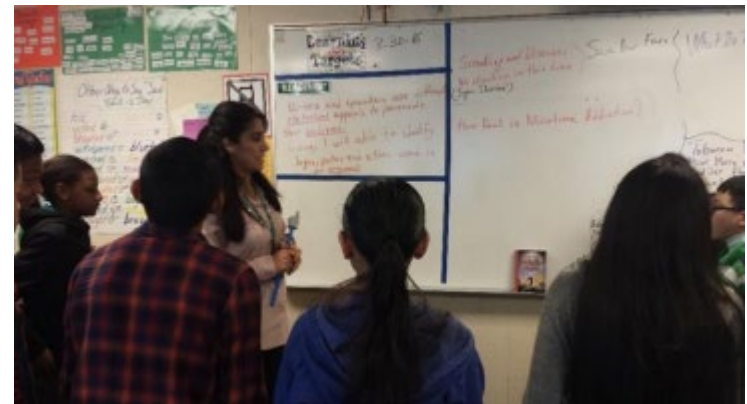
ELA ACTION PLAN		Key Performance Outcome: Increase student achievement in ELA by 3%.
Reading Action Items (Actions that improve performance towards outcomes) What are you going to do?		Key Performance Indicators (KPIs) (Formative measures of actions) What is the measure of student learning that would predict strand level proficiency performance on the SBA?
Teach rigorous, engaging reading lessons using best practices within the Science of Reading research for explicit instruction in Reach, modeling and scaffolding as needed.		<ul style="list-style-type: none"> • K-5 <i>Reach for Reading</i> Unit Assessment data • K-5 i-Ready reading data • K-2 Phonological Awareness and CORE Phonics formative data • K-2 ORF data (fluency and comprehension) • Reach 3-5 Oral Reading passages (fluency and comprehension) • KARK data
Build students' academic and content-specific vocabulary, reading fluency, and comprehension through systematic phonics instruction, word study, GLAD strategies and academic discourse.		<ul style="list-style-type: none"> • K-5 <i>Reach for Reading</i> Unit Assessment data • 1st-5th i-Ready reading data • WIDA data • SBA Interim Assessment Blocks
Use data to inform both Tier 1 and flexible group instruction for all students.		<ul style="list-style-type: none"> • K-5 <i>Reach for Reading</i> Unit Assessment data • K-5 i-Ready reading data • WIDA data • SBA data • IL (Imagine Learning)

Instructional Review

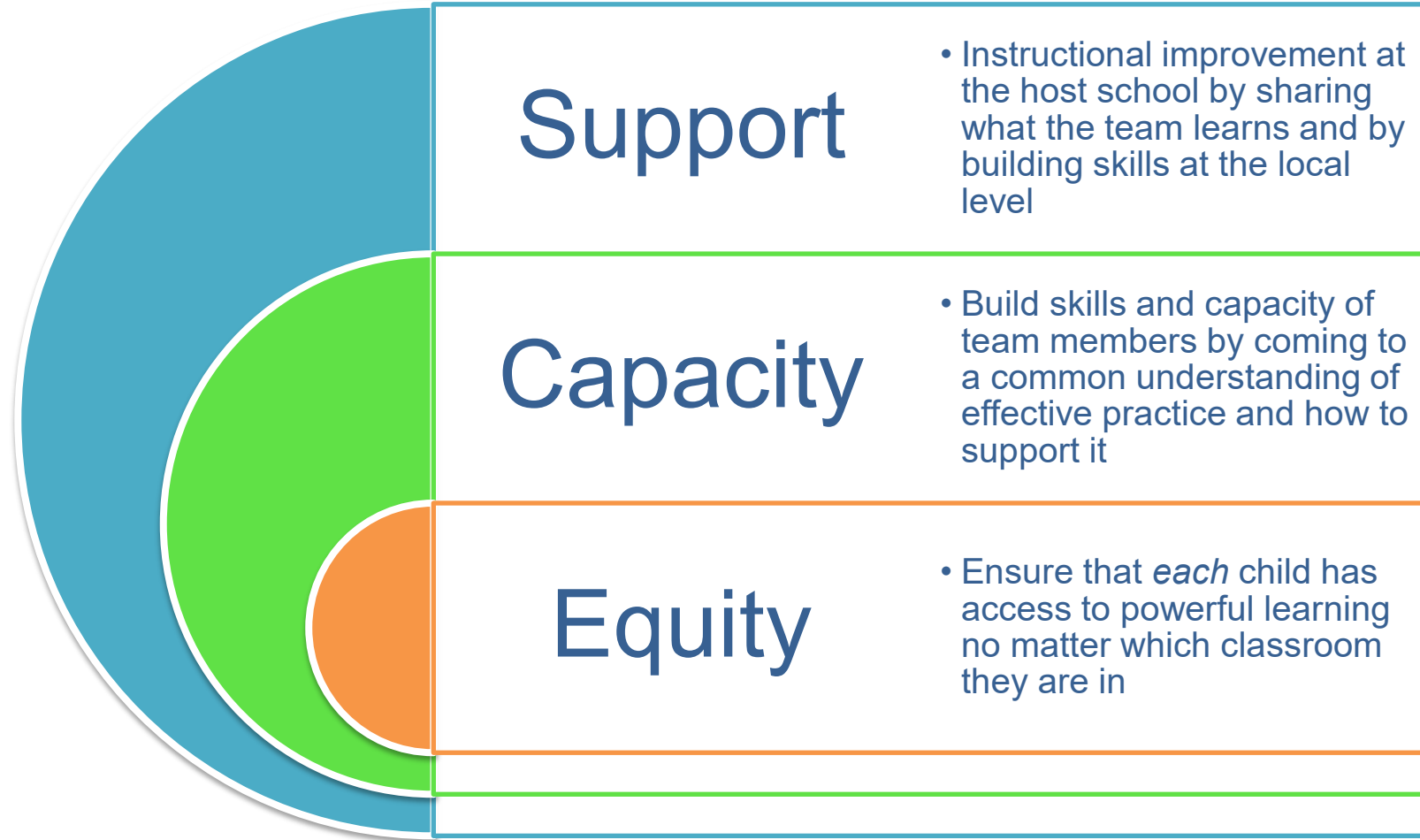


Instructional Review is a **process** used to better understand teaching and learning in schools in order to **improve learning** at scale.

In an Instructional Review session, a group of educators makes a series of visits to classrooms to **observe** what is taking place in the **instructional core**.



Instructional Review



Instructional Review



Who attends?

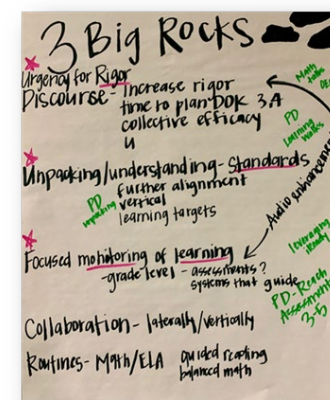
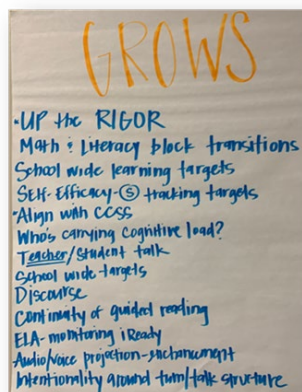
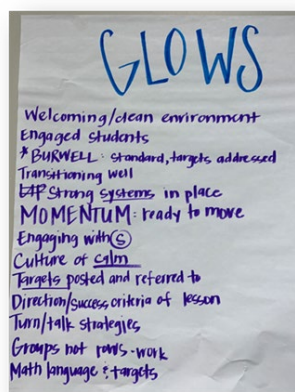
- Superintendent
- Deputy Superintendent / Chief Academic Officer
- Regional Superintendent
- Principal
- Assistant Principal
- Instructional Coaches
- Academic director(s)
- Board director



Instructional Review

Structure

Component	Approx. time
1. Data review presentation (School profile, teacher profile, diagnostic, stakeholder perceptual, real-time (e.g., i-Ready, summative / interim assessments, attendance, behavior, social-emotional learning indicators); SIP strategies; needs assessment	20 mins.
2. Classroom Learning Walks: SIP practices alignment	45-60 mins.
3. Debrief: “glows & grows”	20 mins.
4. Reflection: school-based “huddle”	20 mins.
5. District support & preliminary action planning	15 mins.



Communications to Principals



Communications to Principals

Volume 22, Number 10
For the Week Ending October 13, 2023

Response/Action Required

Calendar of Dates for Elevating Equitable Instructional Practices.....	1
CTE Reporting Training.....	3
Prof. Learning - Implementation of new 4th Grade Resources.....	4
Reminder - Mandatory Vector Trainings.....	5
Staff Art Show Scheduled at CRC.....	6
Required Observance: Veteran's Day, Temperance and Good Citizenship Day.....	8
2023-24 Everett PTSA Council Shoe Fund.....	10
Mental Health Therapists in Schools	11

Response/Action Optional

No Items

Information Only

District Level Funding for Band Programs	12
--	----

Important Resources

Teaching & Learning Folder

<https://docushare.everett.k12.wa.us/docushare/dsweb/View/Collecti-on-5639>

Administrative Outlook Calendar Instructions

1. Click on the folder icon on the upper left side of the page
2. Click on "Public Folders" arrow
3. Click on "All Public Folders" arrow
4. Click on "Administrative Team" arrow
5. Click on "Administrative Calendar" to open

Substitute Outlook Calendar Instructions

1. Open Outlook in the Calendar view
2. From the "Home" menu bar Select "Open Calendar"
3. Select "Open Shared Calendar" – type in Calendar Professional Learning
4. Click OK

This calendar lists all district release professional development that is occurring during the school day. Check this calendar prior to scheduling building workshops that will occur during the school day to make sure they do not conflict with district level trainings targeting the same teachers. All district release substitutes must be approved through Professional Learning.

Accessing Student Emergency Information in Insight

Step One: Go to <https://insight.everettsd.org>

Step Two: Use your district credentials to log in (id/password)

Check the Full Browser Version and click save If viewing on a mobile browser

Step Three: Click on the Everett Pinnacle Insight.qvw box

Step Four: Click on the Student Details button

Step Five: Enter the Student Name (partial ok) or ID # in the top-right

Step Six: View Contacts

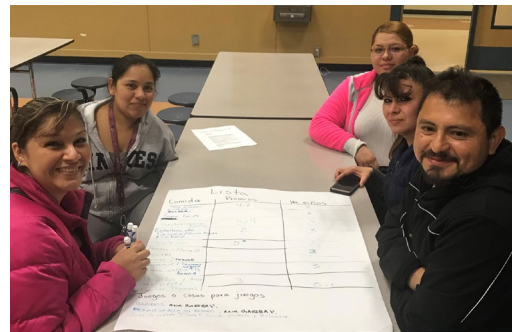
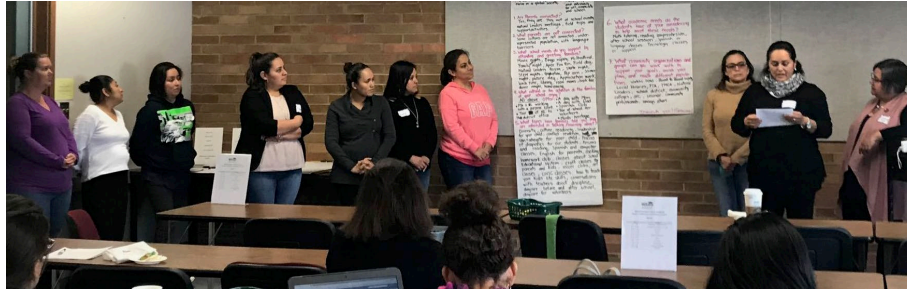
October 17: Quarterly Regional Principals Meeting, 9:00 – 11:00 a.m. Region 1: GAE, Region 2: EHS, Region 3: EIS
October 10: School Board Meeting, 4:30 p.m., Board room A & B
October 24: School Board Meeting, 4:30 p.m., Board room A & B
November 2: H.S. Principals & Assistant Principals Meeting, 3:00 – 5:00 p.m., Port Gardner B
November 7: E.S. Principals & Assistant Principals Meeting, 4:00 – 6:00 p.m., Port Gardner B
November 8: M.S. Principals & Assistant Principals Meeting, 3:30 – 5:30 p.m., Port Gardner B

November 14: School Board Meeting, 4:30 p.m., Board room A & B
November 28: School Board Meeting, 4:30 p.m., Board room A & B
December 12: School Board Meeting, 4:30 p.m., Board room A & B
January 9: School Board Meeting, 4:30 p.m., Board room A & B
January 16: H.S. Principals & Assistant Principals Meeting, 3:00 – 5:00 p.m., Port Gardner B
January 18: Administrators and Supervisors Meeting, 3:30 – 5:30 p.m., Port Gardner A & B
January 23: School Board Meeting, 4:30 p.m., Board room A & B
January 24: M.S. Principals & Assistant Principals Meeting, 3:30 – 5:30 p.m., Port Gardner B
January 25: H.S. Principals & Assistant Principals Meeting, 3:00 – 5:00 p.m., Board Room A & B



- Stuff the Bus!
- Benefit Breakfast
- Classroom grants
- Everett Ready support
- Summer school tuition support
- College in the high school tuition support
- New teacher grants

Natural Leaders



Everett PTSA Council



Everett PTSA Council Strategic Plan

VISION:

The Everett PTSA Council is a meaningful and vital resource to PTAs and our community partners.

MISSION:

The Everett PTSA Council supports, empowers, and guides our PTAs to be successful.

CORE VALUES:

Passion, Respect, Integrity, Dedication, Excellence (P.R.I.D.E.)

PRIORITIES AND GOALS:

1. Advocacy
2. Collaboration
3. Communication
4. Outreach and Diversity
5. Leadership, Education, and Organization

